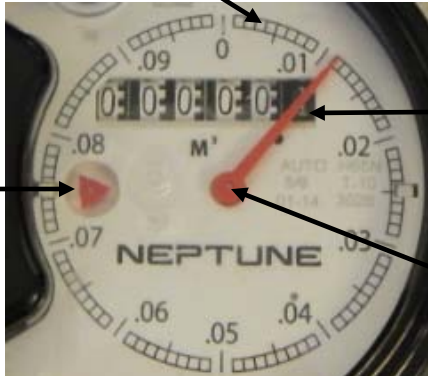


How to read your Neptune Water Meter

1 litre increments
Eg 0 to .01 = 10 litres

As water passes through the meter the "Sweep Hand" moves around the dial, each complete revolution of the dial equals 100 litres of water.

Low Flow Indicator



Register Reading

Your new water meter accurately measures the water you use in litres and cubic metres (m^3).

Your water bill is calculated based on the number of cubic metres used in a billing cycle.

Sweep Hand



Each 100 litres of water used is indicated on the "Register Reading"

100's of Litres
Cubic Metres
10's of Cubic Metres
100's of Cubic Metres 1000's
of Cubic Metres 10,000's of
Cubic Metres

1 Cubic Meter ($1m^3$) of water = 1,000 Litres

Common
Conversions

1 m^3 of water also =

{ 264 US Gallons
220 Imperial Gallons
35.3 Cubic Foot

The triangular shaped "Low Flow Indicator" to the left of the register dial will move when even the smallest amount of water is passing through the meter. You should use the "low flow indicator" periodically to check for leaks in your property.

How to check for leaks in your property using your water meter's "Low Flow Indicator".

- 1) Check to ensure that all faucets, and any appliances that use water, are turned off and make sure that toilets are not flushed during the test.
- 2) Look at your meter and make sure that the "Low Flow Indicator" is NOT moving. If it is NOT

moving, you do not have any leaks.

If you can see it moving then there is likely a leak in your property, check your toilets first, incorrectly seated or worn out toilet flappers are the No.1 cause of leaks in the home.