

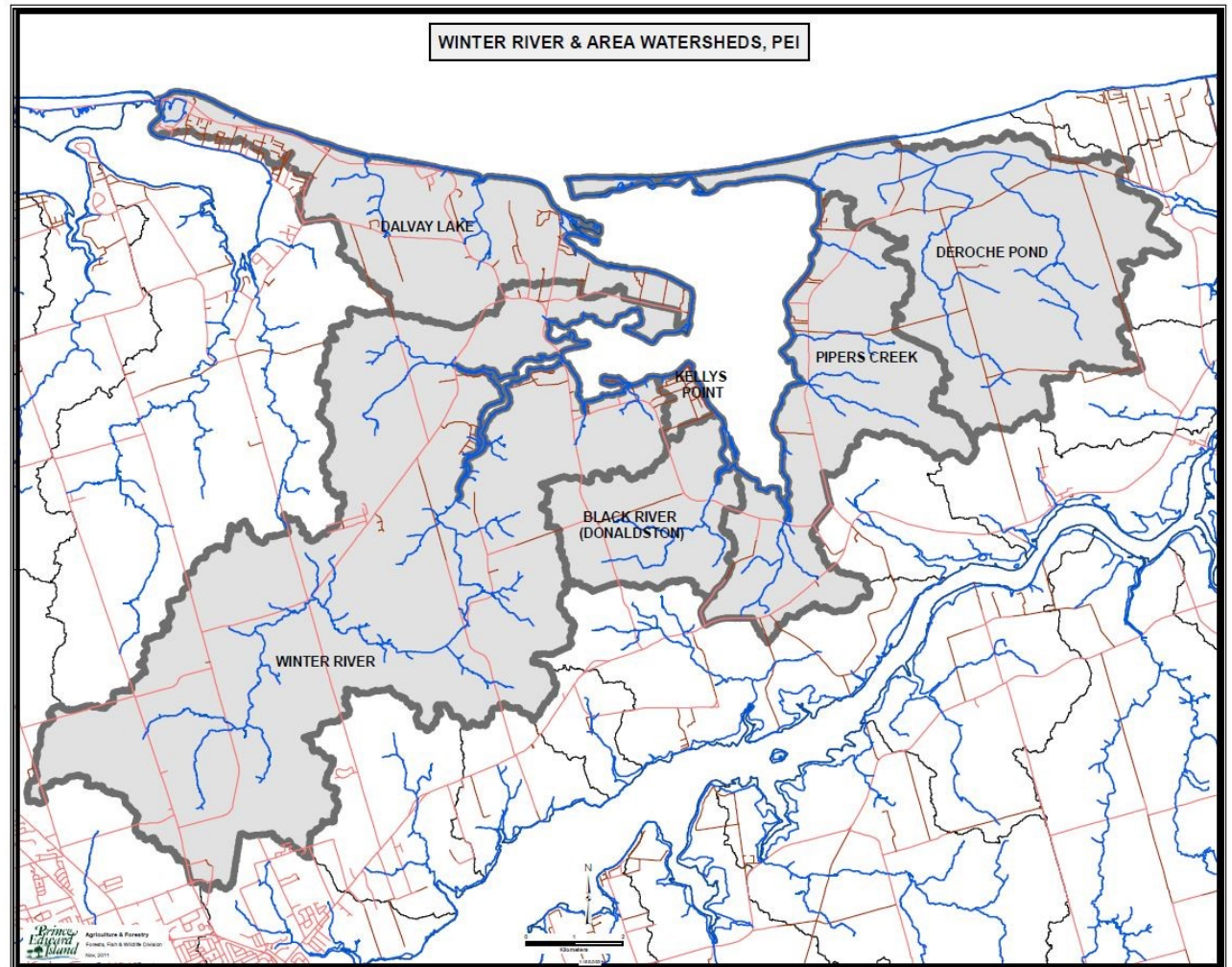
What Does Winter River-Tracadie Bay Watershed Association Do?

- Plant trees
- Collaborate with educators
- Increase public awareness of water issues
- Improve stream conditions, such as to enhance fish habitat.
- Work with land owners to provide information about protecting the watershed
- Educate the public
- Interact with provincial and municipal politicians to provide recommendations on policies and legislation to protect the watershed.

We also provide jobs for area residents, such as students, who help carry out these activities.

Challenges

1. **Water extraction:** Our watershed supplies almost all of the water used by residents and businesses of Charlottetown.
2. **Land management:** Too much fertilizer and silt is coming off the land can cause anoxic conditions in the estuary.
3. **Fish habitat:** When there isn't enough water flowing, fish can't move and when water is too warm many fish can't survive in it.
4. **Damaging activities by individuals:** Off-roading near the river, dumping garbage, and wasting water harm the watershed.
5. **Buffer zones:** Removing trees, disturbing land, and building structures are not allowed in buffer zones and can cause harmful consequences to the watershed.



Ways you can help

1. Become a member.
2. Learn about the importance of water and teach others.
3. Volunteer - we need a wide range of skills.
4. Join our Water Conservation Program.
5. Enjoy the outdoors and appreciate what we have to protect!
6. Tell your municipal and provincial government representatives that you value *Supporting The Watershed, So It Can Support You.*

Background of the Watershed

The watershed covers about 7000 hectares (17,300 acres). Agricultural lands and forests each cover about 40% of our land area.

Other land uses include roads (4.4%), residential (4.2%), wetlands (2.8%), and pits/storage sites/industrial (1.1%).

Although technically not part of the watershed, which normally only includes land and fresh water, the bay forms a vital part of the community and occupies about 1700 hectares (4200 acres). About 80% of the bay is used for off bottom aquaculture, primarily for mussels. Mussels and oysters help improve the water quality by absorbing nutrients that otherwise might cause anoxic conditions. Income, water filtration and a delicious meal all from one little creature!

The groundwater from the watershed has supplied water to the residents of Charlottetown with the development of a pumping station in Brackley in 1930, a pumping station at Union Road in 1949, and a pumping station at Suffolk in 1994. Water quantity issues are a major concern for our organization, since our watershed is the source of almost all municipal water for the City of Charlottetown.

The streams in the watershed have a total length of 42.75 km. When 5km went dry in 2012 this was over 10% of the total length of our streams.

In the 1960s, Winter River was well known as a great place to go angling, but now the fish numbers are significantly diminished. When the streams go dry, fish have nowhere to live and it causes a unique kind of fish kill.

Volunteering

We need you to volunteer.

There are many ways to help, from planting trees, or hanging a community notice on a bulletin board before an event to sharing our social media statuses with your friends - you will can help make our team stronger.

Email Volunteer@WinterTracadie.ca

Water Conservation Program

- Low flow shower heads
- Credits for low flow toilets

We are introducing a new water conservation program, and we want to hear from you. What would you like to see? Recognition for water friendly businesses? Awards for student research relevant to our watershed?

WinterTracadie.ca/water-conservation

Contact Us

Mailing Address:
630 Suffolk Road
Dunstaffnage, PEI
C1C 0P6

www.WinterTracadie.ca

www.facebook.com/WRTBWA

Email: info@WinterTracadie.ca



WINTER RIVER - TRACADIE BAY
WATERSHED ASSOCIATION

Supporting The Watershed,
So It Can Support You

How We Help Our Watershed



Our aim is to protect and enhance the health and aesthetic qualities of the Winter River - Tracadie Bay watershed.