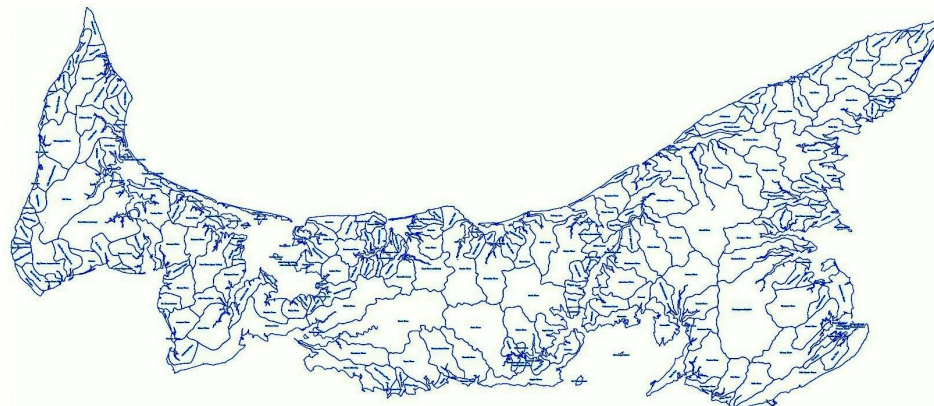
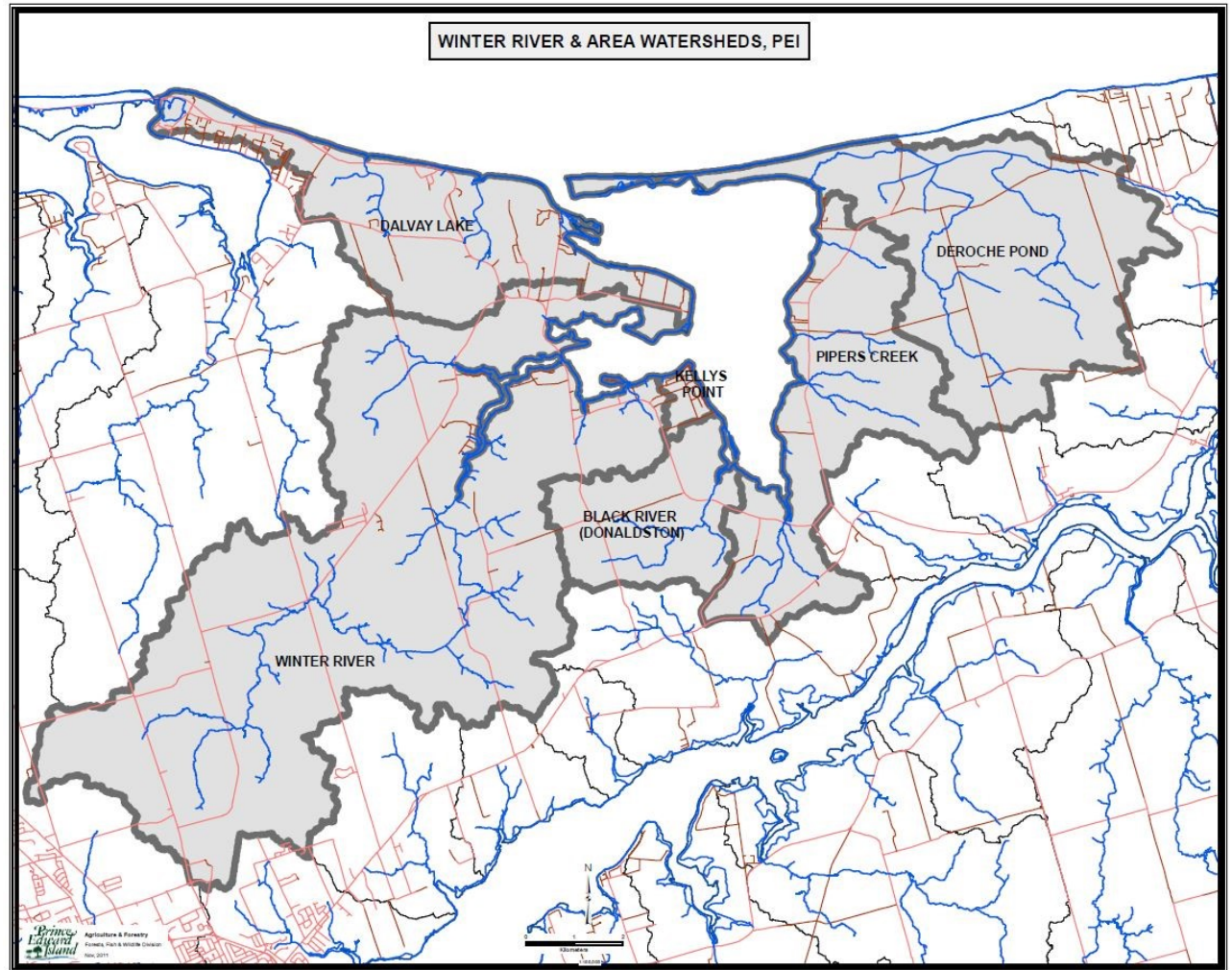


What is a watershed?

- A watershed is defined as an area of land where all the surface water drains into the same place, whether it's a creek, a stream, a river or an ocean. Therefore, all precipitation, such as rain or snow, that falls on a watershed ends up flowing to the same place.
- Watershed boundaries are based on topographical or physical boundaries rather than community or political boundaries.
- Watersheds include not only watercourses, but the entire land base draining into the watercourse. Watersheds are separated by points of land (hills or slopes) at higher elevations than the surrounding lands. From these high points, water drains in different directions into distinct watersheds.
- Watersheds can be very large, such as the Atlantic Ocean watershed, or can be divided into smaller and smaller sub-watersheds based on rivers and small streams. All the streams flowing into small rivers, larger rivers, and eventually into the ocean, form an interconnecting network of waterways.
- The map of our watershed (top figure to right) shows the names of some of our sub-watersheds.
- We all live in a watershed.



PEI is divided up into many different watersheds.

Our neighbors are the Covehead/Brackley Bay, and Hillsborough River watershed groups.

The Land Affects the Water

- In PEI our watersheds are relatively small when compared to many other areas; complete river systems can be considered as one watershed for our purposes.
- Since the water resources within each watershed are interconnected, we all have a stake in what happens in our watershed.
- Not only does water run into the streams and rivers from the surface of a watershed, but water also filters through the soil. So what happens in the watershed's land affects the groundwater too.
- In cities, rainwater runs off roads, parking lots, and large buildings and into the storm water system. In rural areas, more water flows down through the soil and into the groundwater.

Winter River-Tracadie Bay Watershed Association

Our aim is to protect and enhance the health and aesthetic qualities of the Winter River - Tracadie Bay watershed.

We do this by planting trees, increasing awareness of water issues, promoting educational initiatives, working with land owners and aquaculture operators, and much more. We also provide jobs for area residents, who help carry out these activities.

Historical watershed anecdotes

Since 1930 our watershed has the source of almost all municipal water for the City of Charlottetown.

In 1670, what is now the Hudson's Bay Company was granted a monopoly over the lands of the Hudson Bay watershed, which covers millions of square kilometers! (This land grant is approximately the yellow area on the front cover map).

Volunteering

We need you to volunteer.

There are many ways to help, from planting trees, or hanging a notice on a bulletin board before an event, to sharing our social media statuses with your friends — you can help make our team stronger.

Email Volunteer@WinterTracadie.ca

Contact Us

Mailing Address:
630 Suffolk Road
Dunstaffnage, PEI
C1C 0P6

www.WinterTracadie.ca

www.facebook.com/WRTBWA

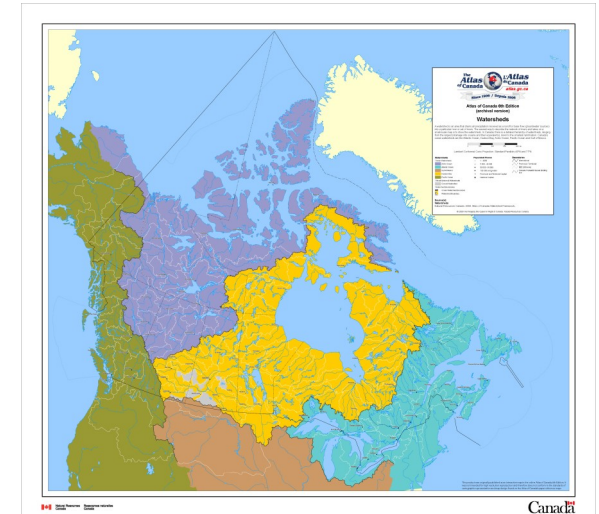
Email: info@WinterTracadie.ca



WINTER RIVER - TRACADIE BAY
WATERSHED ASSOCIATION

Supporting The Watershed,
So It Can Support You

What is a watershed?



Major watersheds of Canada